



Drinkware



21042200

AMERICANO® ECO 350 ML  
RECYCLED TUMBLER

Double-walled tumbler made from recycled plastic, with a twist-on lid. The tumbler is 75% recycled in total, with a recycled mug with black inner layer, and a standard lid. Due to the nature of recycled plastic, there may be small marks or some colour variation. The tumbler has a volume capacity of 350 ml and is fully recyclable. Made in the UK.

AVAILABLE COLOURS

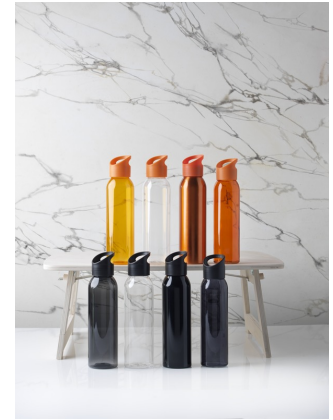




10065301  
SKY 650 ML WATER BOTTLE

The eye-catching Sky bottle is made of aluminium, a lightweight yet durable material. The screw-on mechanism ensures that the lid opens and closes smoothly, and it has a built-in handle for easy carrying. The water bottle is single-walled and holds up to 650 ml of beverages.

AVAILABLE COLOURS



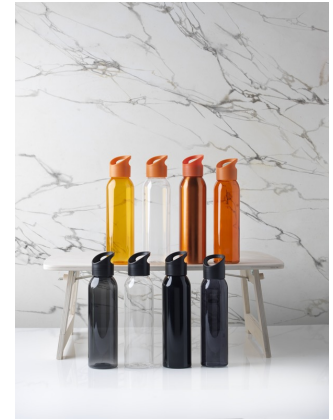


10065501

## SKY 500 ML GLASS WATER BOTTLE

Single-walled glass bottle with screw-on lid. The lid features a handle for easy carrying. Recommended for cold beverages. Do not freeze, do not microwave. Volume capacity is 500 ml. Presented in a gift box. Glass, PP Plastic.

### AVAILABLE COLOURS





10065601

## BODHI 500 ML GLASS WATER BOTTLE

Single-walled glass bottle with screw-on lid. The lid features a strap for easy carrying, as well as a neoprene sleeve. Recommended for cold beverages. Do not freeze, do not microwave. Volume capacity is 500 ml. Presented in a gift box. Glass, Neoprene, Stainless Steel.

### AVAILABLE COLOURS



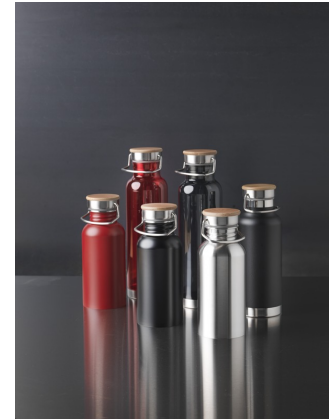


10065701

## THOR 550 ML WATER BOTTLE

Single-walled stainless steel bottle with screw-on lid. The lid features a bamboo top, as well as a handle for easy carrying. Volume capacity is 550 ml. Presented in an Avenue gift box. Stainless Steel, Bamboo.

### AVAILABLE COLOURS



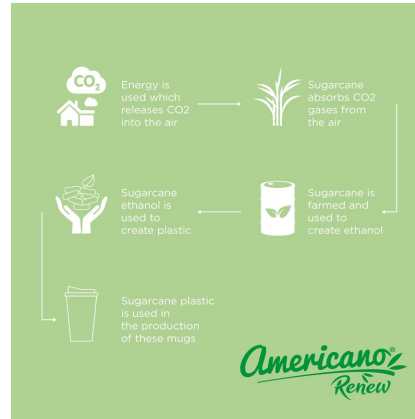


21042602

## AMERICANO® RENEW 350 ML INSULATED TUMBLER

Double-wall insulated tumbler with screw-on lid and 350 ml capacity. Contains 25% plastic derived from sugarcane. This renewable source absorbs carbon dioxide whilst growing and is a by-product of the sugar industry. The use of sugar cane means less oil is used in the manufacture of each tumbler. The tumbler is 100% recyclable and packed in a home compostable bag.

### AVAILABLE COLOURS





21044001

## HYDROFLEX™ CLEAR 500 ML SPORT BOTTLE

Single-walled sport bottle with a screw-fix pull-up lid. Made from flexible MDPE plastic, this squeeze bottle is perfect for sporting environments. Volume capacity is 500 ml. Made in the UK. MDPE Plastic, PP Plastic.

### AVAILABLE COLOURS







21044401

BASELINE 500 ML RECYCLED  
SPORT BOTTLE

Single-walled sport bottle made from in-house pre-consumer recycled plastic. Features a spill-proof lid with push-pull spout. Volume capacity is 500 ml. Shade of black may vary due to the nature of the recycled material. Made in the UK.  
Recycled HDPE Plastic.

AVAILABLE COLOURS





10067101

COVE 500 ML VACUUM INSULATED  
STAINLESS STEEL BOTTLE

Vacuum insulated stainless steel bottle with an iconic design. The insulated 18/8 stainless steel keeps drinks hot or cold for several hours. Tested and approved under German Food Safe Legislation (LFGB), and tested for phthalates content according to REACH regulations.

AVAILABLE COLOURS





10066601

TIDAN 600 ML BOROSILICATE  
GLASS BOTTLE WITH SILICONE  
GRIP

Eco friendly reusable water bottle that provides a pure water drinking experience. The bottle is made from durable borosilicate glass which conserves the pure real fresh taste of water, and it does not any contain harmful chemicals. Features a silicone grip with a leakproof lid made of organic bamboo.

AVAILABLE COLOURS





10066881

LJUNGAN 500 ML COPPER VACUUM  
INSULATED STAINLESS STEEL  
BOTTLE WITH PU LEATHER STRAP A

Copper vacuum insulated stainless steel bottle with a classical and elegant design. Features a PU leather strap and detail on the lid. This makes it ideal for laser engraving, which will highlight the logo in a silver colour creating a beautiful visual effect.

AVAILABLE COLOURS





10090101

NEIVA 425 ML CERAMIC MUG WITH  
CORK BASE

Contemporary ceramic mug with cork base which gives a natural look. Volume capacity is 425 ml. Handwash recommended. Presented in a recycled cardboard gift box. Ceramic, Cork.

AVAILABLE COLOURS





10064502

PEREIRA 320 ML PORCELAIN MUG  
WITH BAMBOO OUTER WALL

Stylish porcelain mug with organic bamboo exterior which provides a natural look and comfortable grip. The Pereira mug features a push-on spill-proof slide-lock lid and is BPA Free. Volume capacity is 320 ml. Handwash recommended. Presented in a recycled cardboard gift box. Porcelain, Bamboo.

AVAILABLE COLOURS





10069601

THOR 660 ML GLASS BOTTLE WITH  
NEOPRENE SLEEVE

Single-walled borosilicate glass bottle with neoprene protective sleeve. Features a screw-on lid with bamboo top, as well as a handle for easy carrying. The bottle is made from 100% durable borosilicate glass which conserves the freshness of the beverage, and it does not contain any harmful chemicals.

AVAILABLE COLOURS





21043700

H2O ACTIVE® BASE TRITAN™ 650  
ML SPOUT LID SPORT BOTTLE

Single-wall sport bottle with ergonomic design. Bottle is made from durable, BPA-free Tritan™ material. Features a spill-proof lid with flip-top drinking spout. Volume capacity is 650 ml. Mix and match colours to create your perfect bottle. Made in Europe. Packed in a home-compostable bag. Eastman Tritan™.

AVAILABLE COLOURS







21044700

H2O ACTIVE® OCTAVE TRITAN™  
600 ML SCREW CAP WATER BOTTLE

Single-wall water bottle made from durable, BPA-free Tritan™ material. Features a secure screw-cap lid. Volume capacity is 600 ml. Mix and match colours to create your perfect bottle. Made in Europe. Packed in a home-compostable bag. Eastman Tritan™.

AVAILABLE COLOURS

